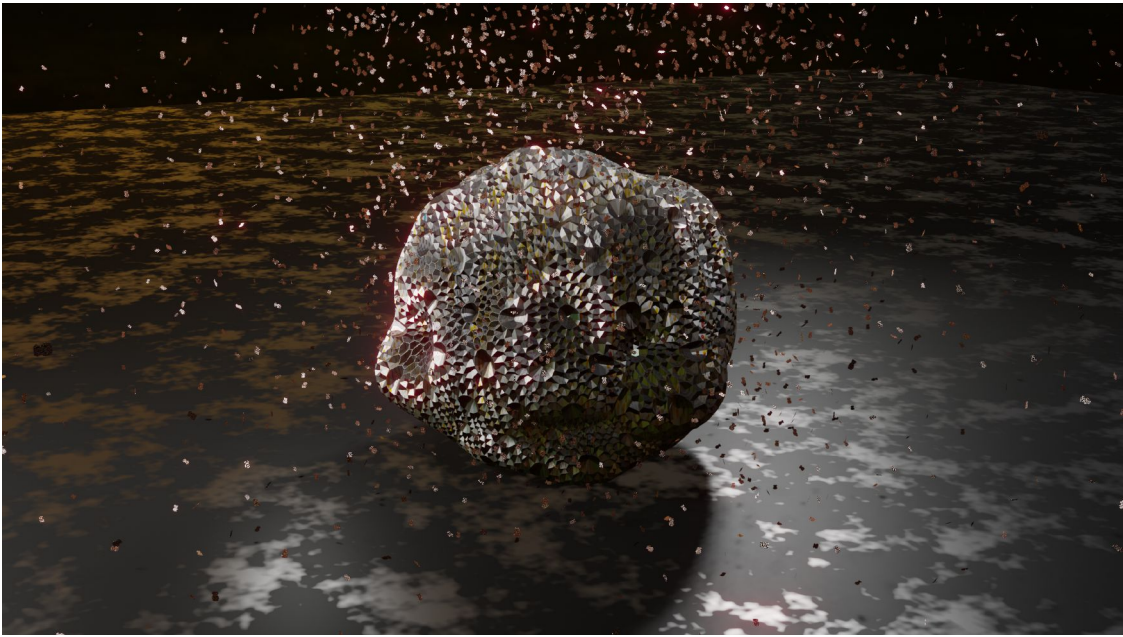




The London Group Reveals Member Exhibitors for 85th Open Exhibition



Sandra Crisp, *Strange Attractors [1,000 years]*, still from a 5 minute video

The London Group, the UK's oldest and most esteemed artists' collective, is delighted to announce the member exhibitors for its upcoming 85th Open exhibition.

With a rich history dating back to its establishment in 1913, The London Group continues to foster the careers of renowned artists and provide a platform for art that challenges traditional norms, making it a pillar of the UK's contemporary art scene. Today, it comprises 94 members practicing across various disciplines, from painting and sculpture to digital and performance art.

The London Group's 85th Open exhibition, scheduled to open in November at Copeland Gallery in London, is a testament to the Group's commitment to contemporary visual art. It will feature a diverse selection of works by both members of the Group and non-member artists. The full list of non-member exhibitors, selected from 1,900 entries by 1,000 artists, will be unveiled next month.

In total, the exhibition will showcase around 160 works reflecting the forefront of contemporary art in all mediums, including painting, sculpture, drawing, print, photography, mixed media, installation, video, sound, digital and performance.



Cadi Froehlich, *Components*, two stoneware pots and salvaged copper
Eric Fong, *Caroline Appleton (b.1831-d.1911), Manor Mental Asylum*, Cyanotype on paper

The exhibition will take place at Copeland Gallery, Copeland Park, London, from Friday 10 November to Sunday 26 November 2023. A unique aspect of the Open Exhibition is the opportunity it gives emerging and established artists to showcase their work alongside the Group's members.

Over £10,000 in prizes will be awarded to non-member artists exhibiting in The London Group Open, including:

- The London Group Prize, £2,000,
- The Felix & Spear Exhibition Prize, a solo exhibition with a London gallery,
- The Jeff Lowe Sculpture prize, £1,000,
- The JPES Partnership Prize, £1,000,
- The Vic Kuell Memorial Prize for Innovation, £1,000,
- The Chelsea Arts Club Trust Stan Smith Award for an Artist Under 35, £1,000,
- The Schauerman Prize for Digital Art, £500,
- The Cornelissen Materials Art Prize, £500.

“I am delighted that so many members are taking part in The London Group Open. This is a unique opportunity for the Group to exhibit alongside artists selected from the Open call. This will make for an exciting and diverse exhibition and we really look forward to seeing the exhibition come to fruition” says The London Group’s President, Amanda Loomes.



Jeff Dellow, *Cascade*, acrylic on canvas

Martin Darbyshire, *The Dance of Anthropocentrism*, ply, timber, indian ink and rotating motor

The London Group is proud to present the following member exhibitors in their 85th Open exhibition:

Moich Abrahams, Ade Adesina, Wendy Anderson, Victoria Arney, Victoria Bartlett, Bryan Benge, Slawomir Blatton, Paul Bonomini, Mary Branson, Clive Burton, Paul & Laura Carey, Stephen Carley, Ece Clarke, Robert Clarke, Peter Clossick, Tim Craven, Sandra Crisp, John Crossley, Philip Crozier, Martin Darbyshire, Jeff Dellow, Beverley Duckworth, Angela Eames, Anthony Eyton, James Faure Walker, Eric Fong, Cadi Froehlich, Marenka Gabeler, Tricia Gillman, Vaughan Grylls, Susan Haire, Alexandra Harley, Aude Hérail Jäger, Julie Held, Martin Heron, Alexander Hinks, Chris Horner, Jane Humphrey, Gillian Ingham, Matthew Kolakowski, Anne Leigniel, Jockel Liess, Amanda Loomes, Jeff Lowe, Hannah Luxton, Graham Mileson, Genetic Moo, Charlotte C Mortensson, Kathleen Mullaniff, Darren Nisbett, Eugene Palmer, Ian Parker, Janet Patterson, Sumi Perera, Steve Pettengell, Michael Phillipson, Christopher Poulton, Daniel Preece, Alexander Ramsay, Victoria Rance, David Redfern, Tom Scase, Tommy Seaward, Philippa Stjernsward, Suzan Swale, Almuth Tebbenhoff, David Tebbs, Paul Tecklenberg, Lisa Traxler, Philippa Tunstill, Joshua Uvieghara, Bill Watson, Neil Weerdmeester, Tisna Westerhof, Susan Wilson, Erika Winstone, David Wiseman, Carol Wyss.

The exhibition will posthumously feature works by three late members of the Group, Anthony Green, Eric Moody and Colette Morey De Morand who sadly died in the last year.

Putting works of member and non-member artists in dialogue, The London Group's 85th Open exhibition offers a rich exploration of diverse themes – from the existential and political to the celebration of everyday joys and beauties. The thought-provoking works on show will span topics such as mental health history, the enduring impact of Grenfell Tower fire, technology's impact on nature, and the objectification of women, to name only a few.

The London Group 85th Open Exhibition will be open and free to see at Copeland Gallery, Copeland Park, 133, Rye Lane, SE15 4ST, from Friday 10 November to Sunday 26 November 2023, from 11am to 5pm daily with late opening on Thursday and Friday until 7pm. The Private View will take place on Thursday 9 November, 6pm – 9pm.

For more information about The London Group and its 85th Open exhibition, please visit <https://www.thelondongroup.com/>



Tisna Westerhof, *Page 3*, embroidery, thread and cotton on board

- Ends -

For press enquiries, please contact Marine Costello at Parker Harris:

E: marine@parkerharris.co.uk

T: 020 3653 0891

For all other enquiries, please contact Parker Harris:

E: info@parkerharris.co.uk

T: 020 3653 0896.

To keep up to date with the latest news and announcements, please follow us on social media:

Parker Harris:

Twitter: [@parkerharrisco](https://twitter.com/parkerharrisco)

Facebook: [@parkerharrisco](https://facebook.com/parkerharrisco)

Instagram: [@parkerharrisco](https://instagram.com/parkerharrisco)

The London Group:

Twitter: [@thelondongroup](https://twitter.com/thelondongroup)

Facebook: [@thelondongroup](https://facebook.com/thelondongroup)

Instagram: [@thelondongroup](https://instagram.com/thelondongroup)

Notes to Editors

The London Group was set up in 1913 by thirty-two artists including Walter Sickert, Jacob Epstein, Wyndham Lewis, David Bomberg, and Henri Gaudier Brzeska, with the aim of creating a powerful artist-run group to act as a counter-balance to institutions such as the Royal Academy. The founding group created a unique structure for an organisation, that has gone on to successfully nurture the careers of many of Britain's best-known artists. Today, The London Group is a thriving democratic artists' collective practicing in all disciplines, from painting and sculpture to moving image, digital and performance, with a full annual events programme in London around the UK and abroad.

Parker Harris is one of the leading visual arts consultancies in the UK facilitating exhibitions, events and opportunities for artists. Specialists in expert creation and project management of visual arts projects spanning all disciplines and all scales, Parker Harris' clients range from trusts and foundations, SMEs and multinationals to charities, arts organisations and individual artists.

Copeland Gallery is one of the most sought-after contemporary galleries in Peckham, London. A spacious, uncluttered space, it celebrates its industrial period features with white washed walls and striking exposed concrete floors. Established in 2013, Copeland Gallery has been a key contribution to the rise of Peckham's art scene, housing hundreds of solo shows, group exhibitions and private views. Copeland Park, 133 Rye Lane, SE15 4ST. Nearest Station: Peckham Rye.